



Laxmi Aashiyana

2 BHK Modern / Living Spaces





Laxmi Aashiyana home is the craft of turning Affordable into Luxury Living

Laxmi Aashiyana's affordable luxurious homes ensure plenty air and light circulation for healthy living. Impressing in first sight, these two bedroom residences are designed smart with abundant natural light & air circulation and have an optimum usage of space to give your family a cozy & comfortable living. A beautifully crafted residential project that offers amenities that all the three generations can fully enjoy. Intelligent architecture work and good interior features and elevation, these exclusive adobes are nature-friendly and bring to you a hassle-free lifestyle.





AMENITIES



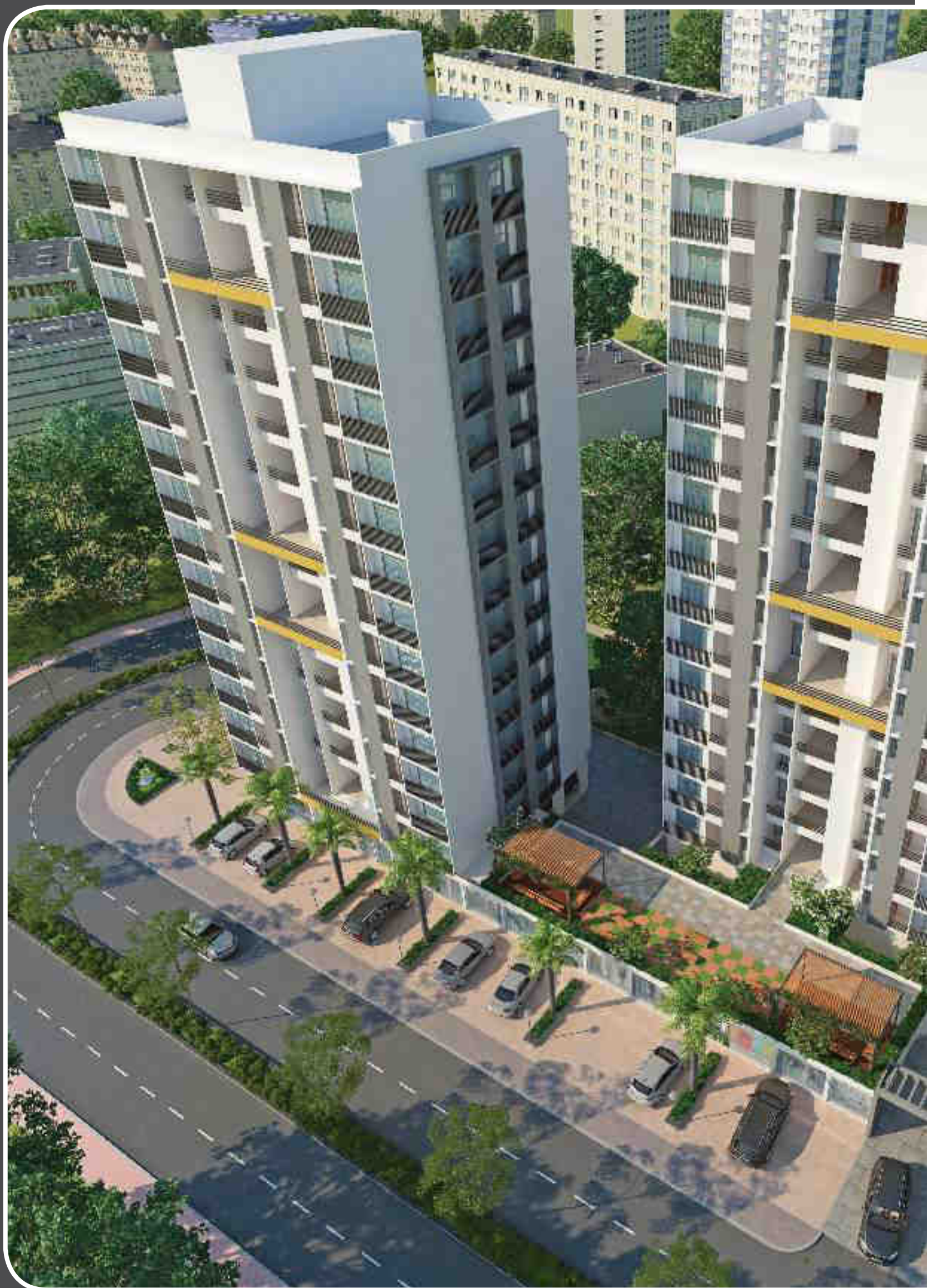
- Amphitheatre
- Outdoor Children's Play Area
- Senior Citizens Park
- Jogging Track



- Vehicle Free Zone for Safe Recreation
- Club House
- Landscape Garden
- Entrance Foyer
- 24 Hours Water Supply
- Campus in CCTV Surveillance



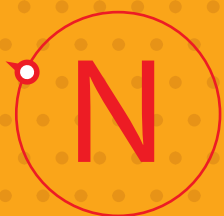
CHILDREN'S PLAY AREA





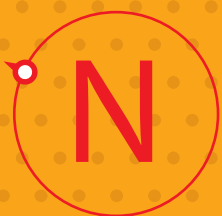
AESTHETICALLY
DESIGNED FOR
AN EXCEPTIONAL
LIVING EXPERIENCE



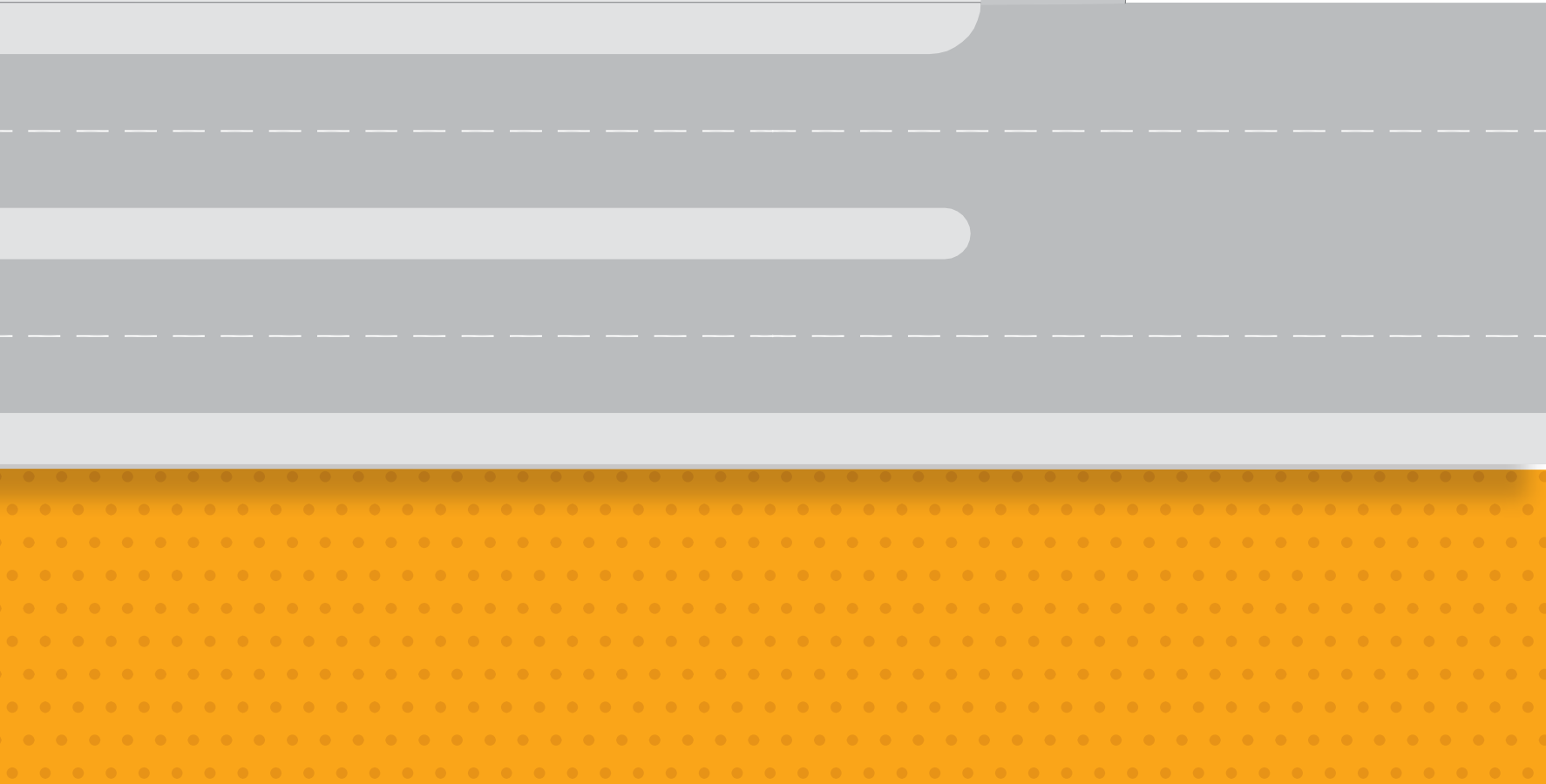
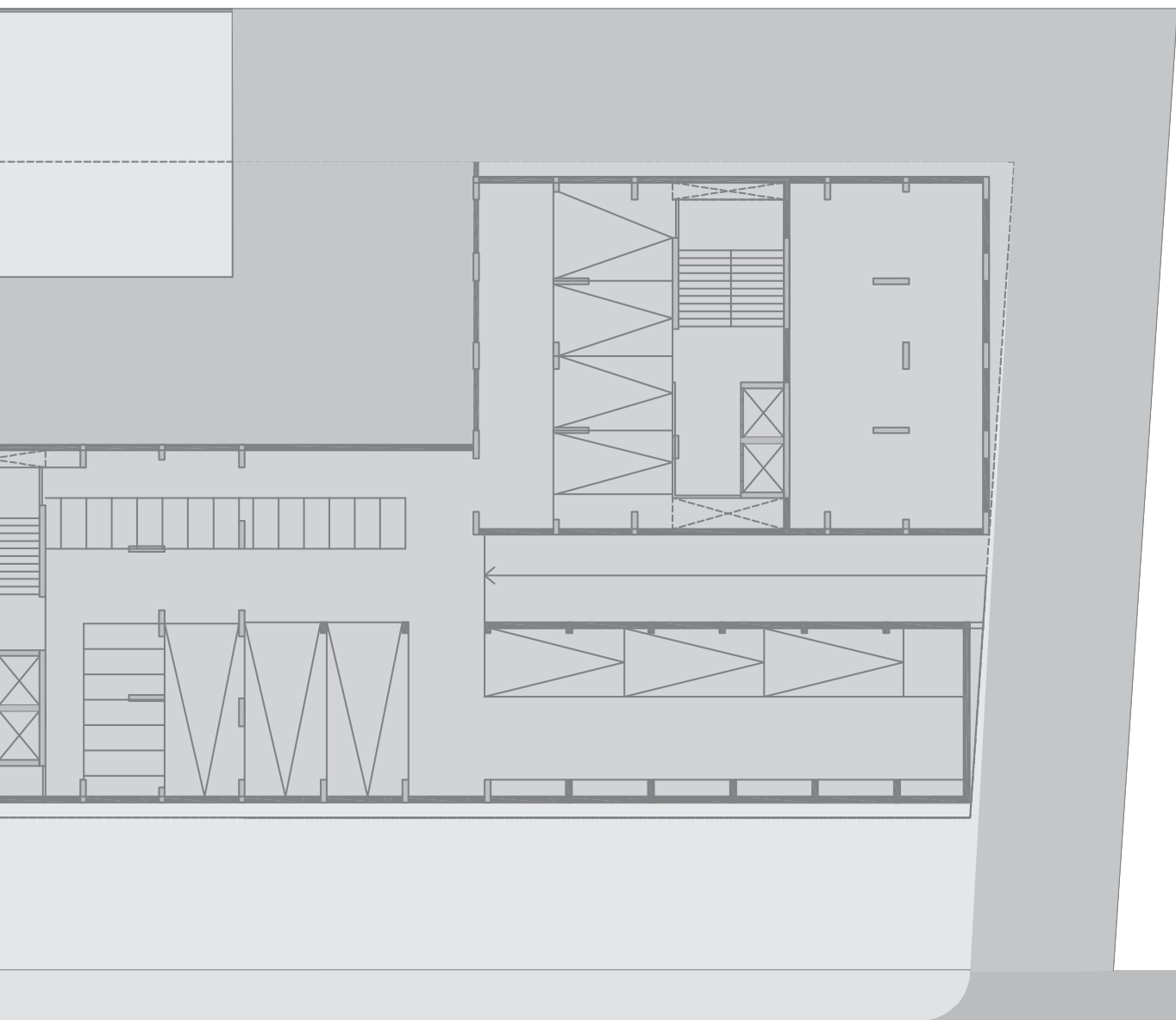


LAYOUT PLAN





BASEMENT PLAN



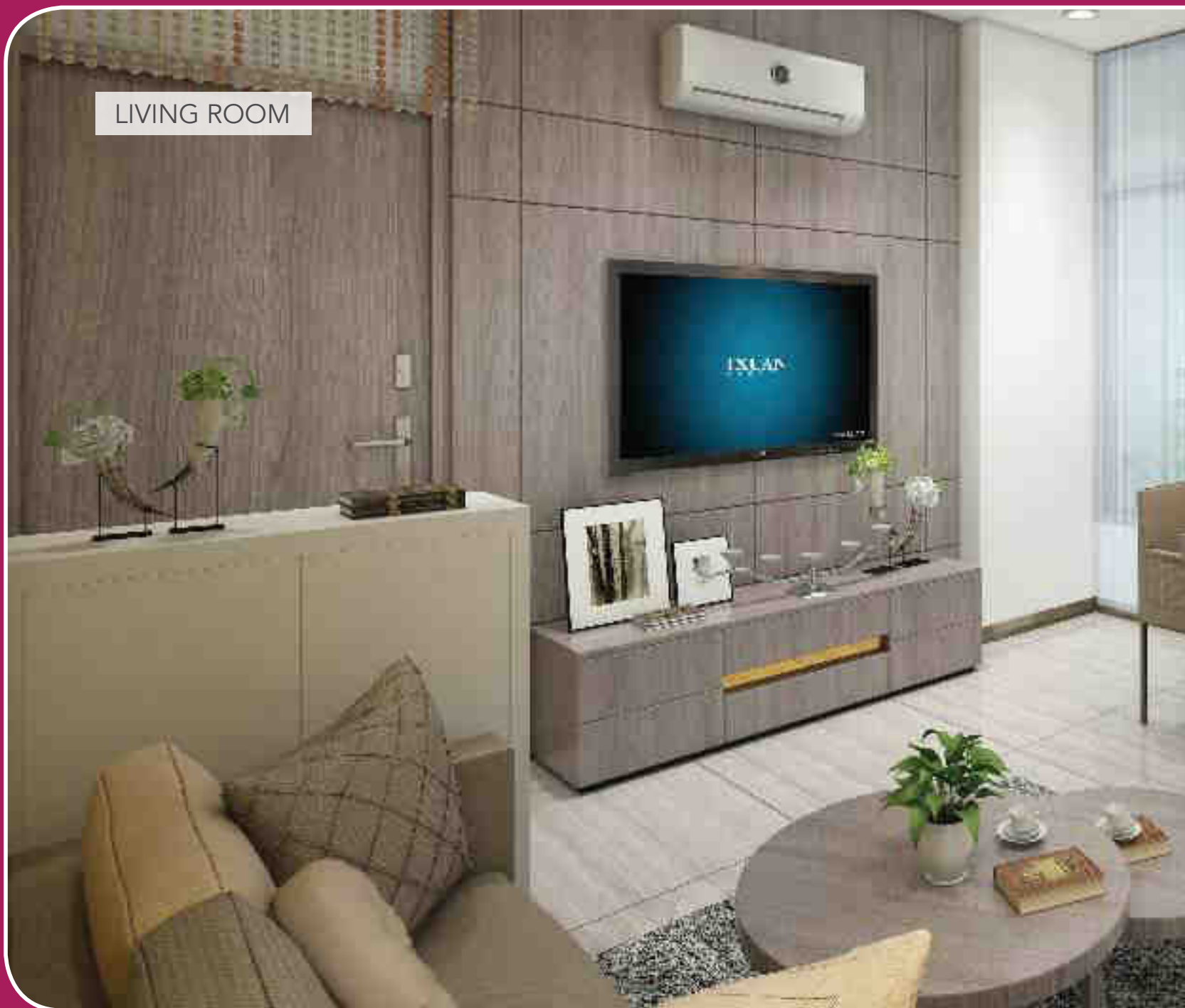
TYPE PLAN



TYPE PLAN



LIVING ROOM



BEDROOM



SAMPL

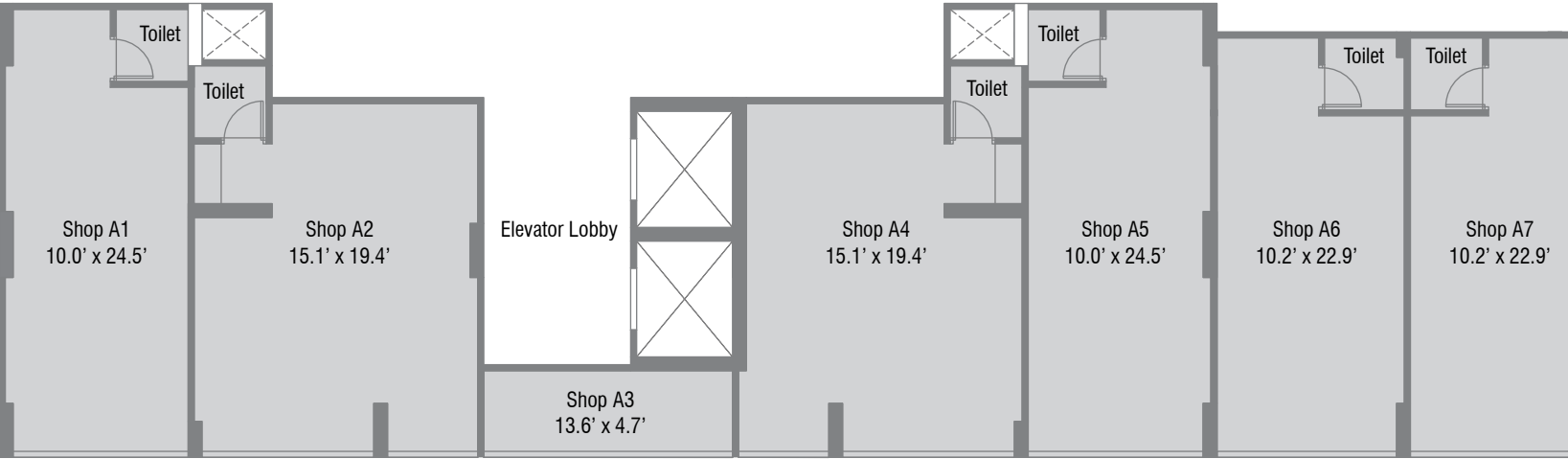


BEDROOM



KITCHEN

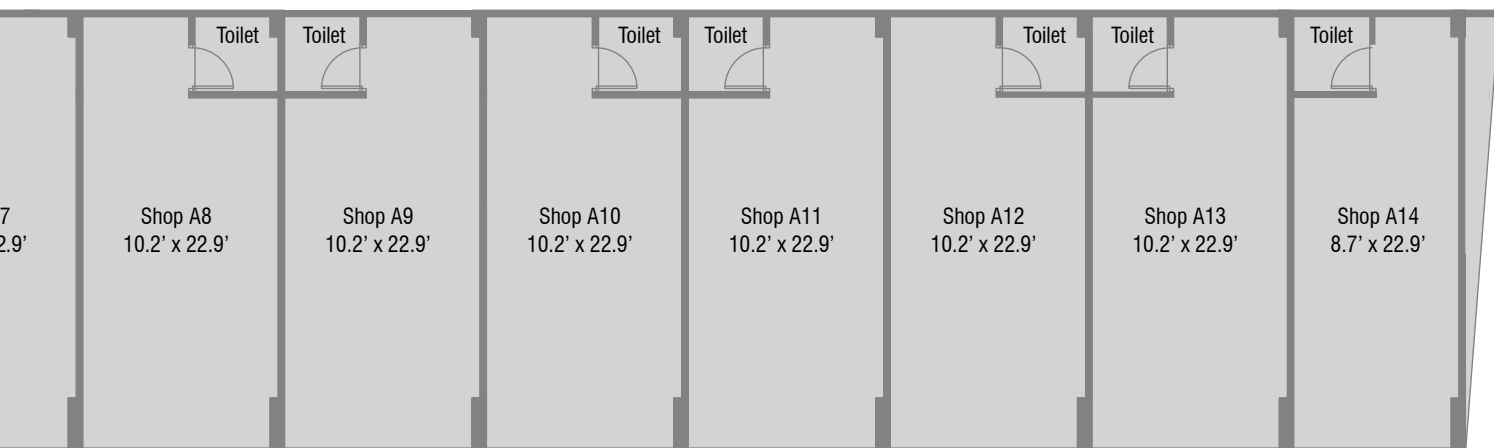
LE HOUSE





Laxmi Aashiyana

2 BHK Modern Living Spaces



Location of
Entrance Gate



Common Plot



Sky Lounge

SPECIFICATIONS



FLOORING

Vitrified tiles in all rooms and master bedroom.



KITCHEN

Granite platform with SS sink, designed glazed tiles upto lintel level.



WALLS

Internal smooth finish Mala plaster with wall putty.
External walls finished with 100% acrylic paint.



DOORS & WINDOWS

All doors laminated doors.



WINDOWS

Fully glazed aluminum section Windows.



TOILETS

Elegantly designed Toilet with glazed / Ceramic Tiles up to Lintel Level
Counter Basin / Wall hung basin
EWC Couple Closet
CP BRASS Fittings: High Quality
Sanitaryware: High Quality



PLUMBING

Concealed plumbing with center point high standard pipe fitting



WATER SUPPLY

Continuous water supply, common bore well and pressure pump distribution system.



ELECTRIFICATION

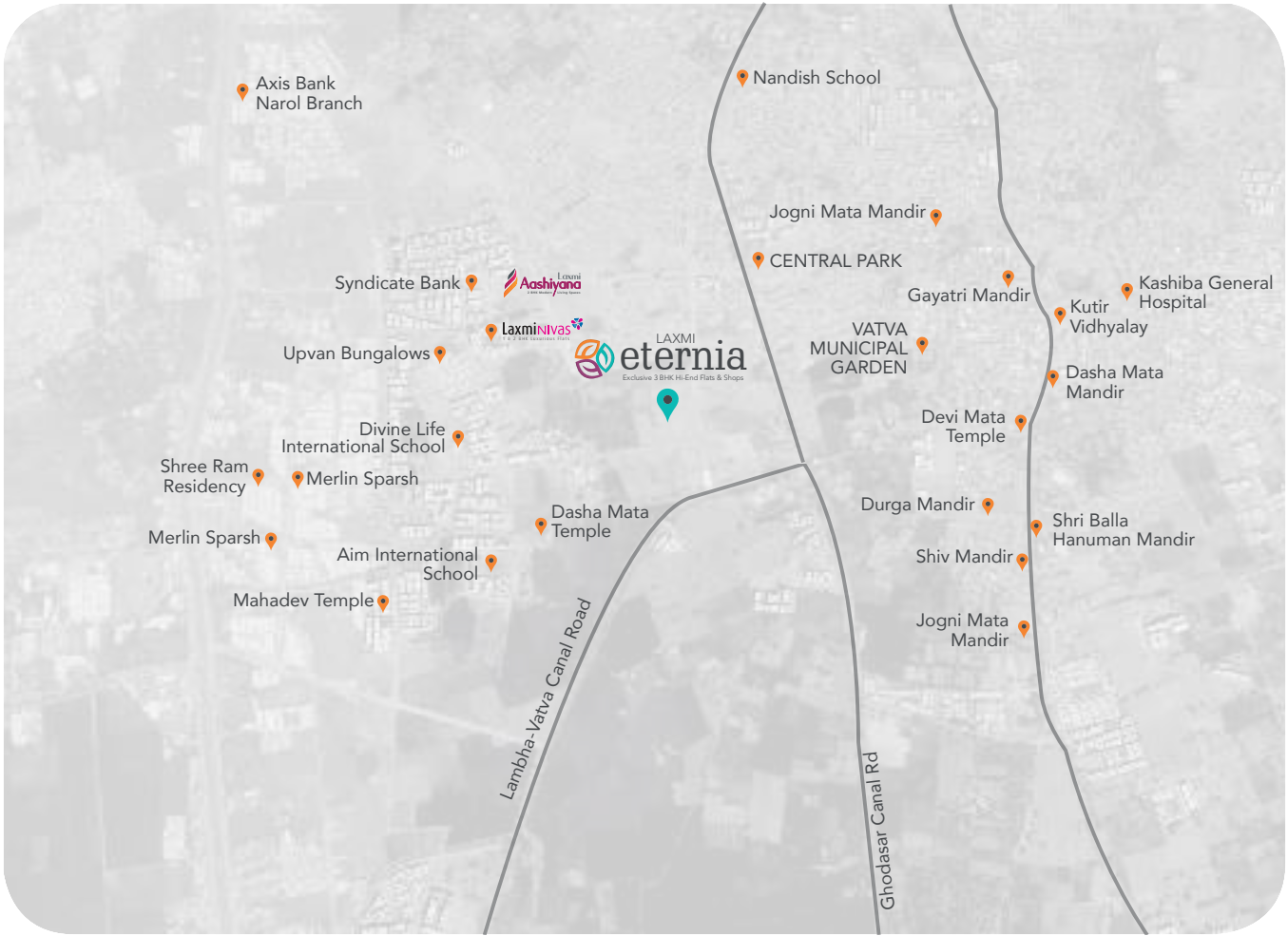
Single phase concealed copper flexible wiring with modular switches & accessories.
MCB distribution panel.
AC point in master bedroom and TV point in bedroom.



TERRACE

Open terraces to be treated with suitable water proofing and finished with China-Mosaic flooring for heat reflection.

LOCATION MAP



Notes:

Stamp Duty, Registration Charges, Legal Charges, GST, AMC Charges & Ele. Co. Charges including cable etc. shall be borne by the purchaser.

Any additional charges or duties levied by the Government/Local authorities during or after the completion of the project will be borne by the purchaser.

In the interest of continual developments in design & quality of construction, the developer reserve all rights to make any changes in the project including technical specifications, designs, planning, layout and all purchasers shall be abide by such charges.

Changes/alternation of any nature including the elevations, Exterior colour scheme of the apartment or any other change affecting the overall design concept & outlook of the project are strictly NOT PERMITTED during or after the completion of the project.

Furniture & fixtures shown in the images of this brochure are just for presentation and are not offered with the project.

This brochure is intended only for easy display and information of the project and does not form part of Legal document.

Subject to Ahmedabad Jurisdiction only.



LAXMI GOLD ORNA HOUSE LTD.
CIN : U36911GJ2010PLC059127

Site :

Laxmi Aashiyana, Nr. Akruti Township
Opp. Laxmi Nivas, Laxmi Circle - 1
Narol - Ahmedabad

Corporate Office:

Laxmi House, Opp. Bandhara No Khancho,
Nr. Ghanchi Pole, M.G. Haveli Road,
Manekchowk, Ahemdabad-15

E: info@laxmilifestyle.co.in

W: www.laxmilifestyle.co.in

.....
M : 9998000036 | 9998000025
.....

Architect :



.....
Structure Consultant :



PR/GJ/AHMEDABAD/AHMEDABAD CITY/AUDA/MAA05811/300719